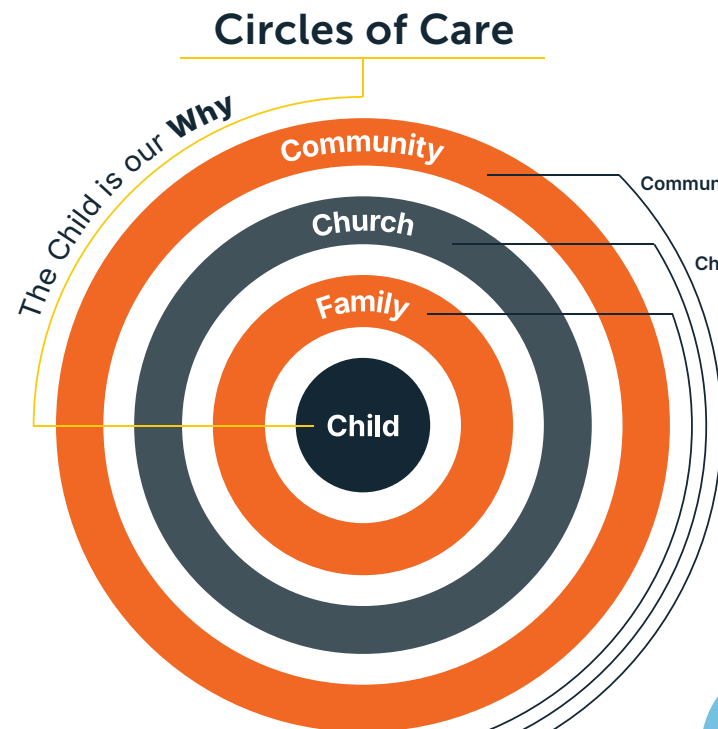


# CARE FOR EVERY CHILD

CarePortal creates connections within the **Circles of Care** around the isolated child. Families, churches, and communities are brought together to create a healthy approach to caring for kids.

*Because every child matters.*



"A cord of three strands is not easily broken." Ecc. 4:12

## How CarePortal Works

### Family in Need



is visited by

A caseworker identifies a high-impact need of a local child or family in crisis — like a crib for a new mom trying to reunify her family or a mentor for a youth transitioning out of foster care.

They submit a request through CarePortal, which immediately notifies the closest local churches and community members who've joined the network.

### CarePortal



shares need with

### Child Serving Professional



types need into

Each church can respond directly back to the caseworker to meet the need, or they can engage other churches and community partners who want to help.

### Churches and Community Members



ensures that

Whether it's one church that responds, or a community of churches, businesses and individuals working together... CarePortal makes vital connections possible through an easy-to-use platform.

### Family is Helped



Every request presents the opportunity for churches to make meaningful connections. Sometimes, connection means meeting one need at just the right moment. At other times, connection starts life-changing relationships.

When you join CarePortal, you're saying "Yes" to connections that can change lives, transform communities, and reverse the foster care crisis in our nation.

## Make a Connection

When local churches step up to meet tangible needs of local children and families in crisis, the story is just beginning. The graphic below provides a window to see the possibilities for supporting vulnerable children and families in crisis across the child welfare spectrum.

	Prevention	Foster Care	Adoption	Transition
<b>TIER 1</b> Physical	Provide resources to stabilize the environment of children and their caregivers.			
<b>TIER 2</b> Relational	Support children and families through time and relationship.			
<b>TIER 3</b> Family	Open your home to children or families, temporarily or permanently.			

Church members using the CarePortal platform found it increases awareness of the needs of hurting children and families in their community, increases action by making it easier to assist families and creates meaningful connections with those they serve.\*



"When missions come right onto your doorstep, that's the best thing that can ever happen in the Church — It re-establishes what the Church is to society."

— Pastor Dennis Graham-Parker, NY

\* According to a May 2020 survey completed by Brown School Evaluation Center at Washington University.

# What You Do Matters

Together, we can collectively impact the lives of countless children and families in crisis. Careworkers are overwhelmed daily by the needs of children and families in their communities. CarePortal connects children in need with people who want to help.

Whether you are a church, non-profit, child-serving agency, business, or a person who cares — there is an opportunity for you to make a difference by joining the movement to provide care for every child.

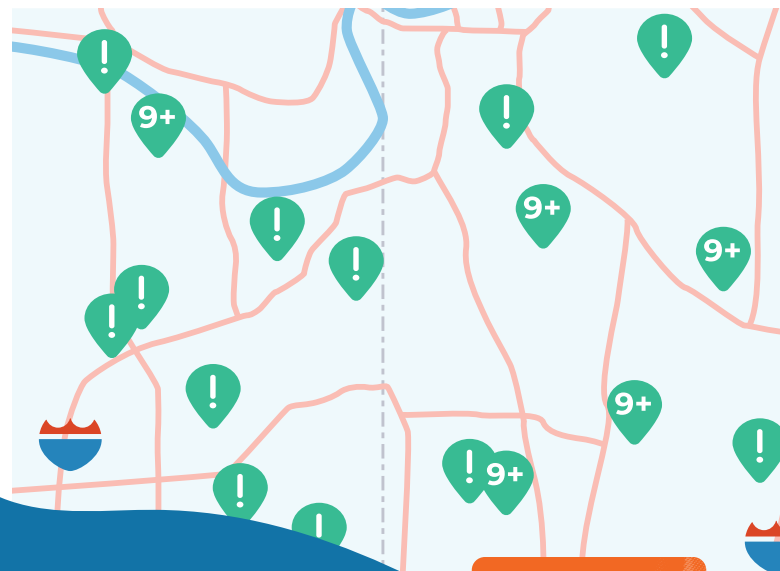
"Whatever you did for one of the least of these... you did for me."

Jesus | Matthew 25:40



## Expand Your Outreach

CarePortal equips churches and ministries with a heart to help local children and families in crisis. Backed by CarePortal technology, training and support, each church in the CarePortal network commits to pray, give, and serve. Churches can also identify and submit needs within their own church and community through the Church Entered Needs feature.



Churches have the option to use a CarePortal Card allowing their teams to directly receive funding from Responders in their church and surrounding community to meet needs. CarePortal handles the donation and tax letters to keep the process simple.

Learn more at [CarePortal.org](https://careportal.org)

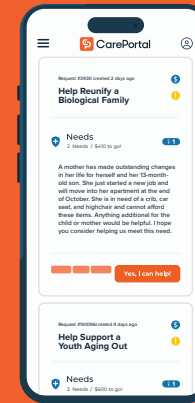


@careportal

3161 Wyandotte St.  
Kansas City, MO 64111  
816.536.8333  
careportal.org



A platform of The Global Orphan Project



## RESOURCES TO HELP YOU SERVE

Multilingual App

The **CarePortal App** empowers Caseworkers and Responders to collaborate even faster and easier to serve children and families in crisis.

### Just-in-Time Training

Responders are equipped with quick training videos specific to each request. The platform brings relevant, best-in-class advice from leading experts to Responders. This training guides them to prepare and debrief while making meaningful connections.

## Serving Kids is Easier than Ever



### Activate Your Church

Open up your ministry doors to receiving needs that support the most vulnerable members of your community. 89% of survey Responders agreed CarePortal made it easier to assist children/families in their community.\*



### Become a Community Champion

Your business or Organization can make a measurable impact by gaining access to vetted needs in your community.

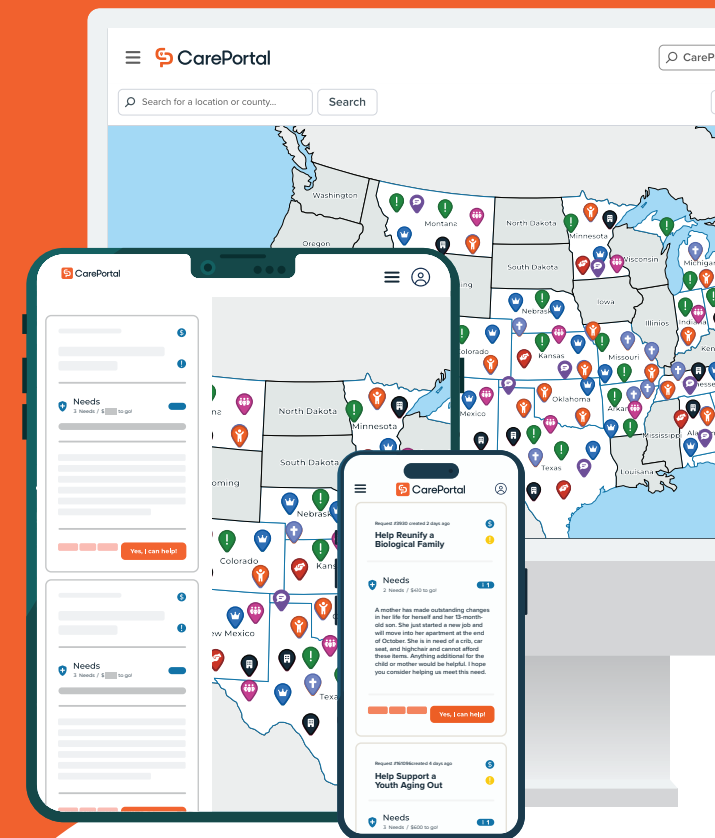


### Become a Requesting Agency

If you're a public or private agency engaging individuals in crisis, you can sign up to request support. Child serving agencies of all types benefit from using CarePortal to serve more children, increase careworker morale and avoid costs.



# Care for every child



A technology platform connecting you to children and families in crisis