

# 5 Reasons to Support H.R. 7037

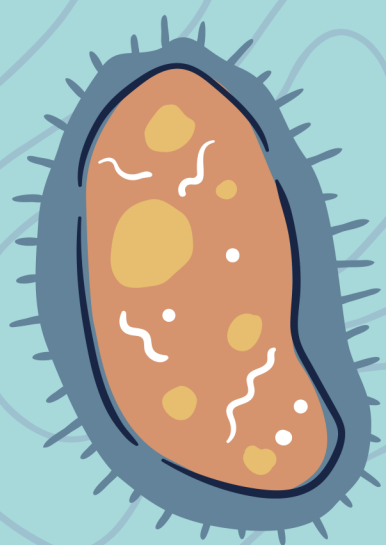
## Social worker shortage hits N.C. public schools

1  
Currently, North Carolina's ratio of School social worker to students is approximately 1:1,025. The nationally recommended ratio is 1:250.



## Covid Educational Loss

2  
Students lost the equivalent of several months' worth of learning in reading and math, income-based gaps in elementary math achievement grew by 20 percent.



## Suicide Rates Doubling

3  
There was a 51 percent rate of increase over one year in suspected suicide attempts among girls ages 12 to 17



## Kids Dealing with Grief

4  
1 in 360 children have lost a parent or caregiver to COVID-19.



## Kids with Disabilities Falling Through Cracks

5  
Students with disabilities were cut off from crucial services for extended periods of time during COVID-19.



### References

Elliot, A. (2022, June 1). Social worker shortage hits N.C. public schools. Spectrum News.

Prothero, A. (2022, September 13). The pandemic was a 'Wrecking ball' for K-12, and we're still tallying the damage. Education Week.

<https://www.edweek.org/leadership/the-pandemic-was-a-wrecking-ball-for-k-12-and-were-still-tallying-the-damage/2022/09>

# 5 Things to Know about the Elementary and Secondary Education Act of 1965

## Policy Strengths

- Specific grant eligibility criteria
- Prioritizes our kids' education



## Policy Limitations

- Neglects role of social workers in the educational journey
- Block grant-based funding model



## Amend Policy to Include School Social Workers

School social workers are able to play a variety of roles that teachers and counselors are unable to do in order to best support our kids.



## Let Social Workers Work

School social workers are uniquely positioned to help our kids overcome socio-emotional and economic barriers to pursue their education. We need their expertise to help get our kids back on track.



## Evaluate School Social Work

The training center that this amendment proposes would not only increase the amount of school social workers but conduct research and training to increase the effectiveness of all current school social workers.



### References

Elementary and Secondary Education Act of 1965. (n.d.). U.S. Department of Education. <https://www2.ed.gov/documents/essa-act-of-1965.pdf>